

NEW

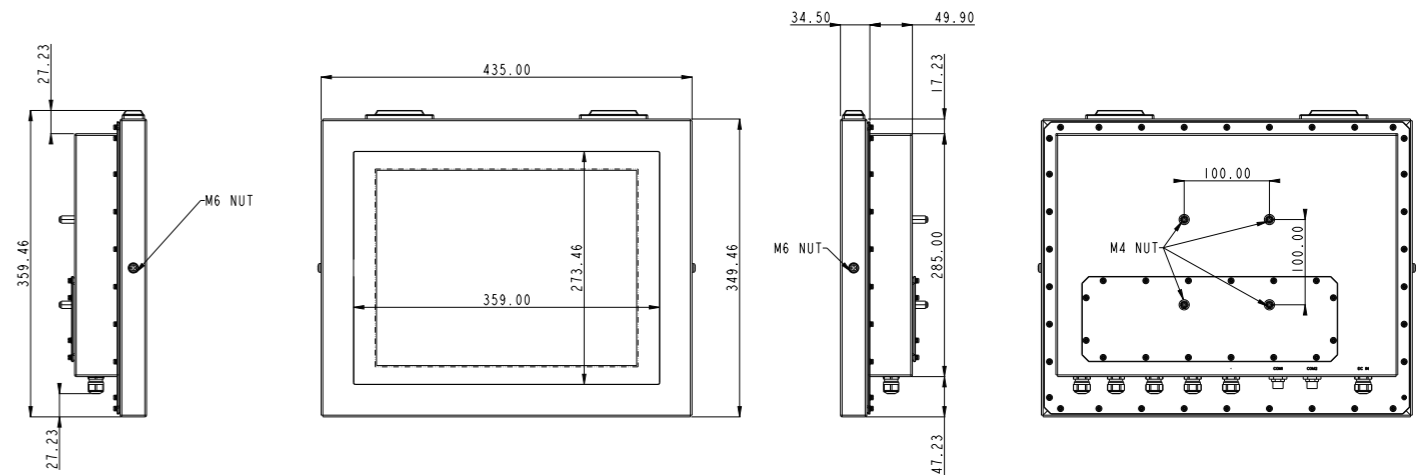


Key Features

- Class 1 Division 2, ATEX Zone 2, and IECEx certified
- Fanless design with highly efficient heat dissipation for 60°C environments
- Boots up with self-heating at -20°C, without a heater
- LAN USB cable gland and water proof M12 COM connector
- Connector panel for easy USB, LAN and add on card interface cable installation
- EMC class B applicable for laboratory & office
- 100% water/dust proof guarantee



Outline Drawing



Main System

CPU	FCBGA1356 6th generation Intel® Core i7/i5/i3 processor (15W max.)
Chipset	SoC
Graphic	Intel® integrated HD Graphics 520 by CPU
Memory	Two 2133 MHz DDR4 SODIMM socket support dual Channel, non-ECC, up to 32GB

LCD Panel

Size	15" 4:3
Resolution	1024 x 768 (XGA)
Color numbers	16.7M colors (RGB 6bit + HiFRC)
Viewing angle	160 (H) / 160 (V)
Contrast	600:1
Brightness	450 nits

Touch Panel

Type	Full Flat Resistive touch, 5-wire
Light transmission	80±5%
Life time	490,000 hours

Storage & Expansion

Storage	2.5" SATA SSD drive bay x 1
Expansion slot	• Mini PCIe x 1 • M.2 Type E x 1

I/O & Power & Control Keys

USB	Maximum USB2.0 x 4
LAN	Maximum LAN ports x 2
*Maximum USB2.0 and LAN ports are 4 ports via 4 glands	
COM	1 x M12 8pin for COM 1/RS-232 1 x M12 8pin for COM 2/RS-232/422/485
Power input	1 x gland DC power
Power adapter	100W AC-DC power adapter with 24V DC output, 1.2M cable

Mechanical & Environmental

Housing	Stainless steel (SUS304), chassis type
IP rating	IP66 / NEMA4X
Cooling	Fanless
Dimension	435 x 350 x 84 mm (W x H x D, not include I/O connectors)
Weight (net)	11 Kg (net)
Temperature	Operation Temperature -20 ~ 60 °C Storage Temperature -20~60°C
Humidity	Operation Relative Humidity 10%~90%, non-condensing Storage Relative Humidity 10%~90%, non-condensing
Mounting	VESA 100 X 100, side mount M6 x 2
Certification	EMC: FCC, CE (EMC), VCCI Class B Safety: IEC-62368 C1D2, ATEX Zone2, IECEx

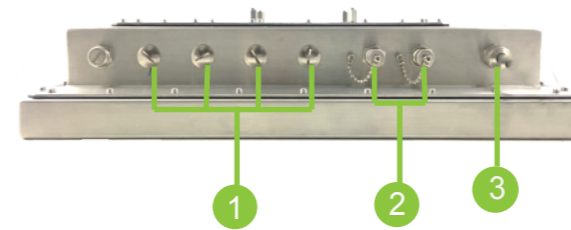
*OS: Win7 · Win10

Options

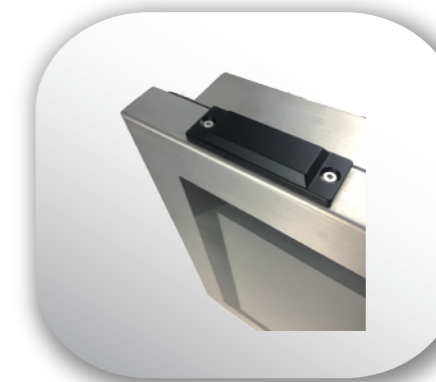
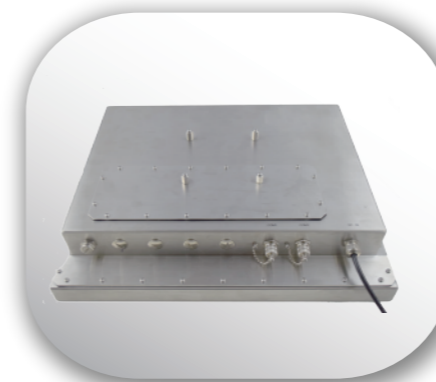
- USB2.0 extension cable through gland
- LAN extension cable through gland
- M12 COM extension cable
- Wireless(IEEE802.11ac/b/g/n) or wireless + Bluetooth kit
- 100W AC-DC power adapter with 24V DC output 50 meter DC cable length
- Panel mounting by bezel kit

Packing List:

- DVD-Title for driver and manual
- 100W AC-DC power adapter
- Power extension cable
- Power cord x 1
- Cable glands x 4



- 1 USB, LAN ports
- 2 COM ports(M12 x2)
- 3 DC-in



Ordering Information

WTPE-9E66-15W	15" FANLESS	Core i5-6200U / DDR4 4G RAM / 128 SSD / Full flat R-Touch
---------------	-------------	---